

Campaign Catch Up



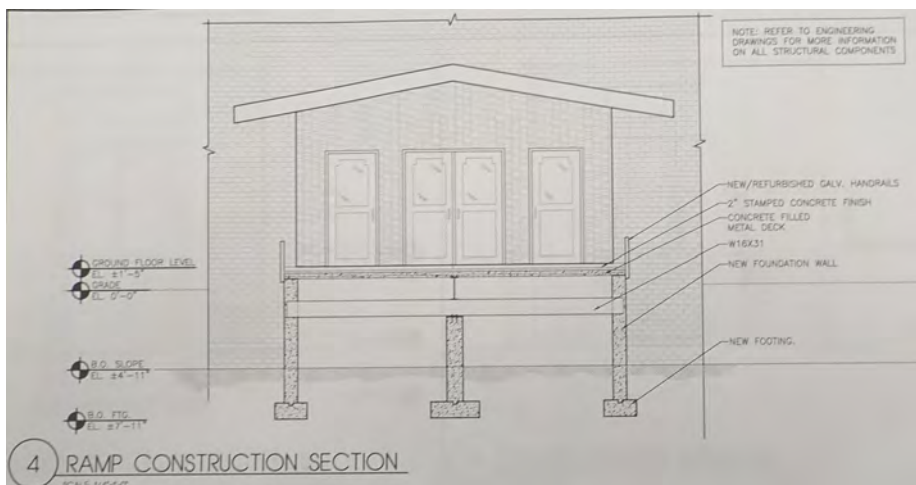
August 12, 2018

Vol I Edition 28

Total Pledged: \$840,883

10% 20% 30% 40% 50% 60% 70% 80% 90% 100%

Meetings Held



Thanks to all who have donated or are fulfilling their pledge. **389 households** have now offered their financial support. A special thanks to the parishioner who increased their pledge last week. Please join them if you can. Each pledge makes a difference.

Please remember:

- * Pledges can be made over a period of three or four years.
- * Pledge payments are in addition to your weekly offertory.
- * All contributions are tax deductible.
- * Make checks payable to: St. Margaret's Capital Campaign

Appointments with the contractors who offered bids on our entrances project were held last Monday. Representatives from the diocese, our parish and the architect met with each of the contractors individually. We reviewed the Schedule of Values they presented. (Schedule of Values are the estimated costs of the various parts of the project.) Because of the way that the front "bridge" was built, there are very specific concrete and steel demolition and construction issues that need to be addressed at those meetings. These are very serious issues and we have to be completely satisfied with their answers. [We are still waiting for bids on the tree removal for the oil tank excavation, the second project.]

Equal Sacrifice,
Not Equal Giving

Proposed Schedule of Work

PHASE I Fall 2018

Approximate Cost: \$450,000

- Replace the Church Entrance Bridge and Side Stairways
- Mandated Removal of the oil tank in the Parish Center and replace the Boiler

- Update the Kitchen in the Auditorium

PHASE II Fall 2019

Approximate Cost: \$290,000

- Update Auditorium Bathrooms and Replace Parish Center's Handicapped lift
- Add Handicapped Parking spaces and Re-coat & re-stripe the Parking lot
- Install new padding on the kneelers

PHASE III Fall 2020

Approximate Cost: \$210,000

- Update Fire and Security Alarm systems in the Church and Parish Center
- Replace the Sidewalks
- Replace the Windows in the Parish Center

Funded

Pledged

Unfunded